



PRODUCT SPECIFICATIONS - SANDTRAPPER

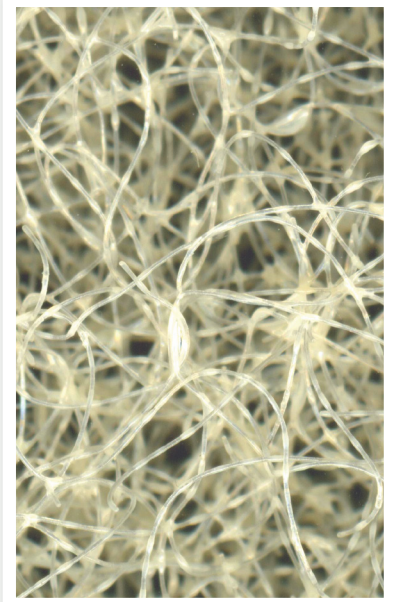


1.0 DESCRIPTION

The Sandtrapper II nonwoven material (matrix) is constructed of polyester fibers in a textured nonwoven fabrication.

2.0 PROPERTIES

Physical Property	Value
Color	Opaque
Weight - oz sq yd/kg sq m(lbs/roll)	16 / .376 (75)
Thickness (mm)	15
Fiber Type	Polyester
Binder	Cross-Linking Non Soluble
Area Per Roll - 56" (1.42m)	560 ft ² (52.02m ²)
Area Per Roll - 90" (2.286m)	1125 ft ² (104.5m ²)
Rolls Per Trailer - 56" (1.42m)	60
Rolls Per Trailer - 90" (2.286m)	38-42



3.0 USE

Sandtrapper II is used for golf course bunkers with extreme to moderate slopes in order to combat washouts and sand contamination. It is used along the sloped areas and used throughout the entire bunker. It can be used in hybrid configurations with more cost-conscious products — Sandtrapper MD and Sandtrapper I.

4.0 CONSTRUCTION

Sand Trapper II is a matrix of polyester fiber and latex binder.

5.0 GREEN INITIATIVE

Water Based Latex Resins are used in the manufacturing process. No phenol-formaldehyde resins are used in our binding process.

Manufacturing plants operate under EPA approved Clean Air Permit.

6.0 PRODUCT CARE

To prolong the life of the Sand Trapper II material (matrix), it is recommended that the product be stored indoors or covered when outdoors for an extended period to maintain protection from UV light.





PRODUCT SPECIFICATIONS - SANDTRAPPER



1.0 DESCRIPTION

The Sandtrapper MD nonwoven material (matrix) is constructed of polyester fibers in a textured nonwoven fabrication.

2.0 PROPERTIES

Physical Property	Value
Color	White
Weight - oz sq yd/kg sq m(lbs/roll)	12 / .284 (100)
Thickness (mm)	14
Fiber Type	Polyester
Binder	Cross-Linking Non Soluble
Area Per Roll - 56" (1.42m)	1120 ft ² (104.5m ²)
Area Per Roll - 90" (2.286m)	1350 ft ² (125.42m ²)
Rolls Per Trailer - 56" (1.42m)	55
Rolls Per Trailer - 90" (2.286m)	38-42



3.0 USE

Sandtrapper MD is used for golf course bunkers with high to moderate slopes in order to combat washouts and sand contamination. It is used along the sloped areas and used throughout the entire bunker. It can be used in hybrid configurations with other styles.

4.0 CONSTRUCTION

Sandtrapper MD is a matrix of polyester fiber and latex binder.

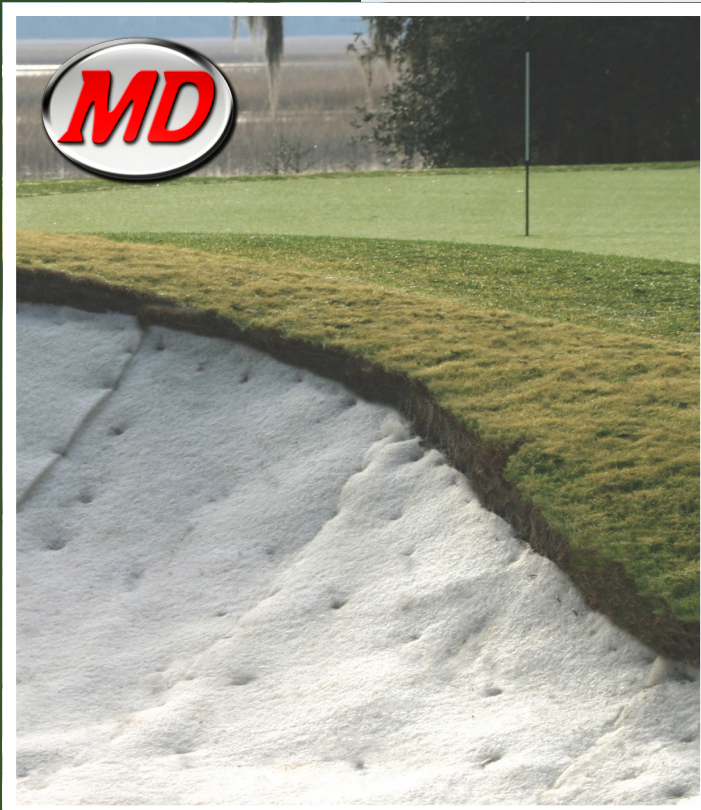
5.0 GREEN INITIATIVE

Water Based Latex Resins are used in the manufacturing process. No phenol-formaldehyde resins are used in our binding process.

Manufacturing plants operate under EPA approved Clean Air Permit.

6.0 PRODUCT CARE

To prolong the life of the Sandtrapper MD material (matrix), it is recommended that the product be stored indoors or covered when outdoors for an extended period to maintain protection from UV light.





PRODUCT SPECIFICATIONS - SANDTRAPPER



1.0 DESCRIPTION

The Sandtrapper I nonwoven material (matrix) is constructed of polyester fibers in a textured nonwoven fabrication.

2.0 PROPERTIES

Physical Property	Value
Color	White
Weight - oz sq yd/kg sq m(lbs/roll)	6 / .142 (70)
Thickness (mm)	7
Fiber Type	Polyester
Binder	Cross-Linking Non Soluble
Area Per Roll - 56" (1.42m)	1120 ft ² (104.5m ²)
Area Per Roll - 90" (2.286m)	1800 ft ² (167.22m ²)
Rolls Per Trailer - 56" (1.42m)	55
Rolls Per Trailer - 90" (2.286m)	38-42



3.0 USE

Sandtrapper I is used for golf course bunkers with low to moderate slopes in order to combat washouts and sand contamination. It is used along the sloped areas and used throughout the entire bunker. It can be used in hybrid configurations with other styles.

4.0 CONSTRUCTION

Sandtrapper I is a matrix of polyester fiber and latex binder.

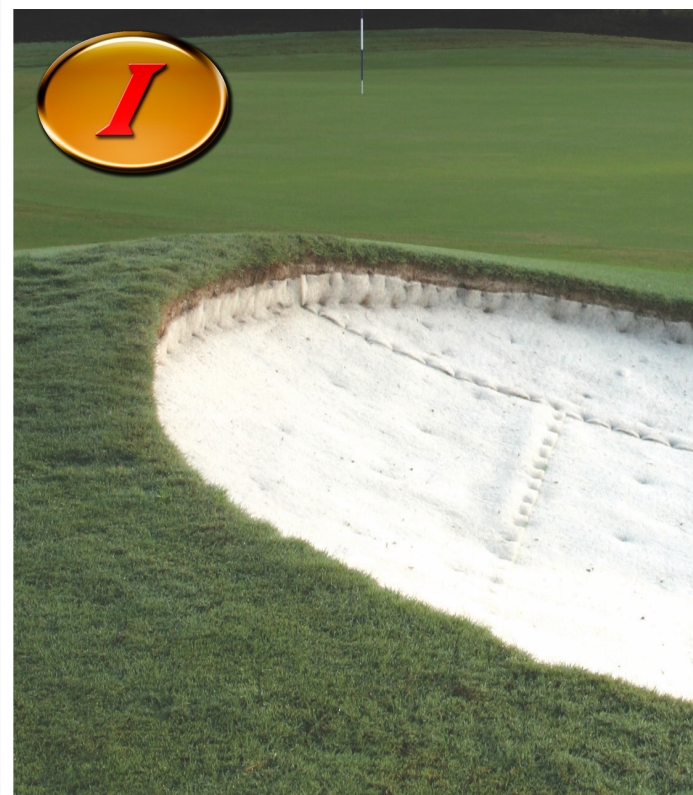
5.0 GREEN INITIATIVE

Water Based Latex Resins are used in the manufacturing process. No phenol-formaldehyde resins are used in our binding process.

Manufacturing plants operate under EPA approved Clean Air Permit.

6.0 PRODUCT CARE

To prolong the life of the Sandtrapper I material (matrix), it is recommended that the product be stored indoors or covered when outdoors for an extended period to maintain protection from UV light.





PRODUCT SPECIFICATIONS - SANDTRAPPER



1.0 DESCRIPTION

The Sandtrapper SL nonwoven material (matrix) is constructed of polyester fibers in a textured nonwoven fabrication.

2.0 PROPERTIES

Physical Property	Value
Color	White
Weight - oz sq yd/kg sq m(lbs/roll)	11 / .31 (70)
Thickness (mm)	25
Fiber Type	Polyester
Binder	Cross-Linking Non Soluble
Area Per Roll - 56" (1.42m)	560 ft ² (52.02m ²)
Rolls Per Trailer - 56" (1.42m)	call



3.0 USE

Sandtrapper SL is used for golf course bunkers in order to combat washouts and sand contamination. It is used along the sloped areas and used throughout the entire bunker. It can be used in hybrid configurations with other styles.

4.0 CONSTRUCTION

Sandtrapper SL is a matrix of high-quality, low-denier polyester fiber and applied with a latex binder providing solid drainage and sand retention capabilities.

5.0 GREEN INITIATIVE

Water Based Latex Resins are used in the manufacturing process. No phenol-formaldehyde resins are used in our binding process.

Manufacturing plants operate under EPA approved Clean Air Permit.

6.0 PRODUCT CARE

To prolong the life of the Sandtrapper SL material (matrix), it is recommended that the product be stored indoors or covered when outdoors for an extended period to maintain protection from UV light.

